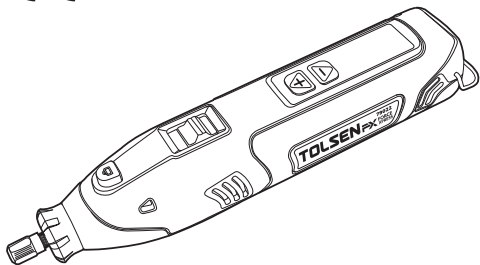


TOLSEN **FX** FORCE XPRESS

79022 CORDLESS MINI ROTARY TOOL KIT

INSTRUCTION MANUAL

12V



SAVE THIS MANUAL!

You will need this manual for safety instructions, operating procedures and warranty. Put it and the original sales receipt in a safe dry place for future reference.

IMPORTANT SAFETY INFORMATION



WARNING:

Read all safety warnings and all instructions. Failure to follow the warnings and instructions may result in electric shock, fire and/or serious injury.

Personal Safety

1. Stay alert, watch what you are doing and use common sense when operating a power tool. Do not use a power tool while you are tired or under the influence of drugs, alcohol or medication. A moment of inattention while operating power tools may result in serious personal injury.
2. Use personal protective equipment. Always wear eye protection. Protective equipment such as dust mask, nonskid safety shoes, hard hat, or hearing protection used for appropriate conditions will reduce personal injuries.

Battery Tool Use and Care

1. Recharge only with the charger specified by the manufacturer. A charger that is suitable for one type of battery pack may create a risk of fire when used with another battery pack.
2. Use power tools only with specifically designated battery packs. Use of any other battery packs may create a risk of injury and fire.

Service

Have your power tool serviced by a qualified repair person using only identical replacement parts. This will ensure that the safety of the power tool is maintained.

Safety Rules for Rotary Tools

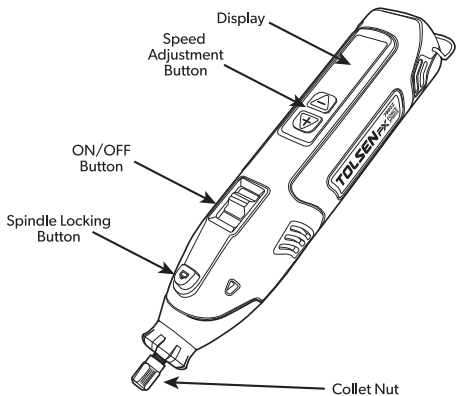
1. The arbor size of wheels, sanding drums or any other accessory must properly fit the spindle or collet of the power tool.
2. Mandrel mounted wheels, sanding drums, cutters or other accessories must be fully inserted into the collet or chuck.
3. Do not use a damaged accessory. Before each use inspect the accessory such as abrasive wheels for chips and cracks, sanding drum for cracks, tear or excess wear, wire brush for loose or cracked wires. If power tool or accessory is dropped, inspect for damage or install an undamaged accessory. After inspecting and installing an accessory, position yourself and bystanders away from the plane of the rotating accessory and run the power tool at maximum no-load speed for one minute.
4. Wear personal protective equipment. Depending on application, use face shield, safety goggles or safety glasses. As appropriate, wear dust mask, hearing protectors, gloves and workshop apron capable of stopping small abrasive or workpiece fragments. The eye protection must be capable of stopping flying debris generated by various operations.
5. Never lay the power tool down until the accessory has come to a complete stop.
6. After changing the bits or making any adjustments, make sure the collet nut, chuck or any other adjustment devices are securely tightened.
7. Do not run the power tool while carrying it at your side.
8. Regularly clean the power tool's air vents.
9. Do not operate the power tool near flammable materials.
10. Do not use accessories that require liquid coolants.
11. Use in a well-ventilated area.
12. Do not put your hands near the rotating drill bit during the use of power tools to avoid danger.
13. Do not reach in the area of the spinning bit.
14. Do not touch the bit or collet after use.
15. Do not alter or misuse tool.
16. This product is not intended for use as a dental drill, in human or veterinary medical applications.

DESCRIPTION

Rated voltage	12VDC
Power	24Wh 2000mAh Li-ion battery
No-load speed	n_0 : 5000-30000/min-10%
Collet Size	1/8"
Charging plug	TYPE-C
Charge indication	When charging, the indicator light blinks repeatedly. When fully charged, all lights turn on.



FUNCTIONS



INSTALL OR REPLACE THE ACCESSORIES

1. Turn off the tool.
2. Press the spindle lock, ensure the spindle lock has been push back to its chunk then loosen the locking collar.
3. Remove previous accessory and store safely.
4. Select the appropriate accessory for the job
5. Seat the accessory fully into the collect and tighten the locking collar firmly by spanner.

TOOL CHARGE

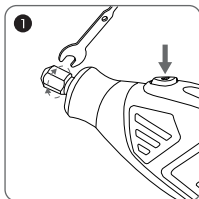
1. In order to ensure your work smoothly, while the new product not used before or not used for a long time, it must be fully charged before using again.
2. Charging: insert the TYPE-C plug into the tool TYPE-C socket, connect the other end of type C with USB charger or mobile USB power charger. While charging, the light indicator will be flashing, after fully charged, the display shows 100%, when the power is less than 10%, the tool needs to be charged.
3. If the tool is not used for a long time, please charge every 3 months, so that the lithium battery remains active.

Attention: It is recommended to use the USB charger with output DC 5V / 9V (> 2000 mA)

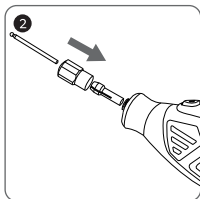
PRODUCT ON, OFF / SPEED SETTING

1. Dial the switch in "OFF" gear, shutdown state, dial to "ON" gear, boot state.
2. Press the "+" or "-" button to adjust the speed at 5000-30000/min-10% max

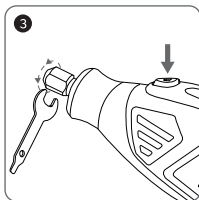
How to use



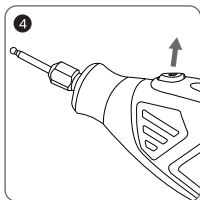
1 Press down the spindle locking button and unscrew the nut



2 Choose the suitable collet and put the black nut

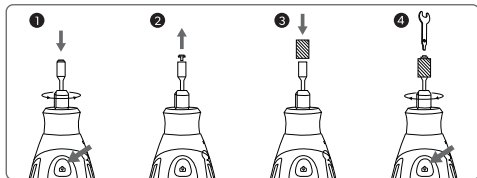


3 Insert the bits you need, hold the lock button and screw on the nut tightly.



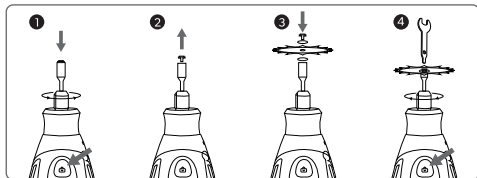
4 Release the spindle locking button.

How to fit a sanding band ?



1. Press down the spindle lock button and insert the sanding drum into the collet and tighten the nut.
2. Loosen the screw of the sanding drum by the spanner.
3. Install the sanding band.
4. Tighten the screw of the sanding drum with a spanner.

How to fit the HSS cutting disc ?



1. Press down the spindle lock button and insert the HSS cutting disc into the collet and tighten the nut.
2. Loosen the screw of the HSS cutting disc by the spanner.
3. Install the cutting wheel, and 1 red on each side.
4. Tighten the screw of the sanding drum with a spanner.

TROUBLESHOOTING

Code	Code description	Counter Measure
E5	Any two battery voltage difference >0.3 V	Contact the after-sales service and replace the battery
E3	Battery high and low temperature protection	When charging, recharge after the battery returns to normal temperature
E3	Battery high and low temperature protection	When in use, shut off then re-start(the tool can be re-start only after the tool returns to normal temperature)
E1	Overload protection	Shut off the tool then re-boot.
E2	Tool is locked forcibly after 3 consecutive E1 overload protection within 30 S	Plug the charger immediately to activate or wait 1 minute for automatic activation
Lo	Power below 10% shows Lo and empty battery flashing	Low battery, charge the tool.
under voltage protection	Any battery cell is lower than 2.8 V, forced shutdown	Charge the tool

CE DECLARATION OF CONFORMITY

WE
SUZHOU TOLSEN TOOLS CO.,LTD.
198 HUASHAN ROAD, ZHANGJIAGANG,
JIANGSU, CHINA

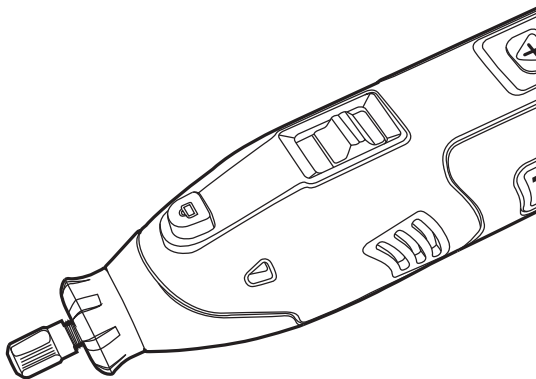
Declare that the product
79022
CORDLESS MINI ROTARY TOOL KIT

Complies with the essential health and safety requirements of
the following Directices:
council directive 2006/42/EC
Low Voltage Directive -2014/35/EU

Standards and technical specifications referred to:
EN 60745-1:2009+A1:2010
EN 60745-2-23:2013
EN IEC 55014-1:2021
EN IEC 55014-2:2021
EN IEC 61000-3-2:2019/A2:2024
EN 61000-3-3:2013/A2:2021/AC:2022-01

Authorised Signatory and technical file holder
Signed for and on behalf of:
SUZHOU TOLSEN TOOLS CO.,LTD.
198 HUASHAN ROAD, ZHANGJIAGANG,
JIANGSU, CHINA
WANG QING
Group Quality Director
on: 14/11/2023





**SUZHOU TOLSEN
TOOLS CO.,LTD.**

www.tolsentools.com

TOLSEN is a trademark or
registered trademark of TOLSEN
TOOLS. All rights reserved.
MADE IN CHINA



SCAN TO VISIT
PRODUCT LINK

5M27