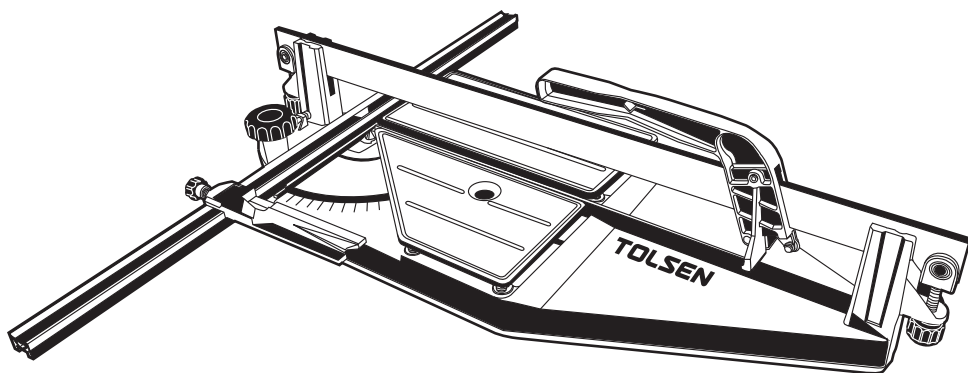


TOLSEN

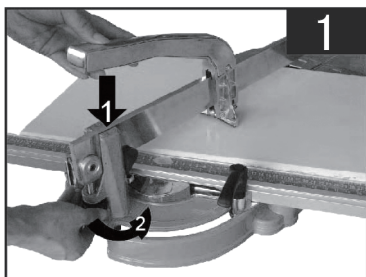
41090/41093/41094 HEAVY DUTY TILE CUTTER

INSTRUCTION MANUAL

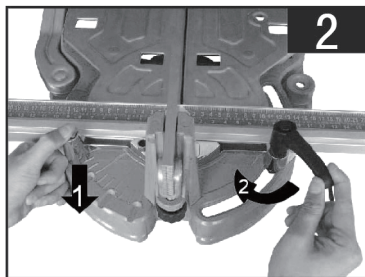


SAVE THIS MANUAL !

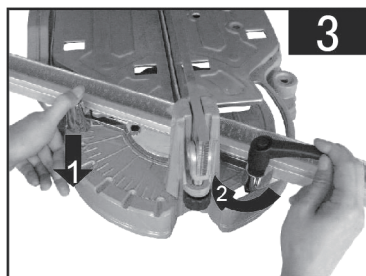
To reduce the risk of injury , all operators and maintenance personnel must read and understand these instructions before operating , changing accessories or performing maintenance on equipment we produced. All possible situations cannot be covered in these instructions. Care must be exercised by everyone using, maintaining or work near this equipment.

SETUP

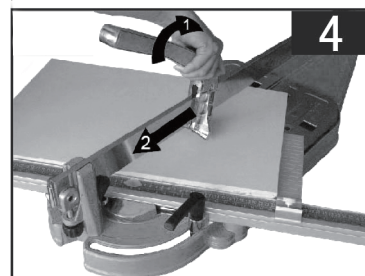
1. Before operating, adjust the adjusting screw to make the height of handle in perfect position to cut the tile easily. (figure 1)



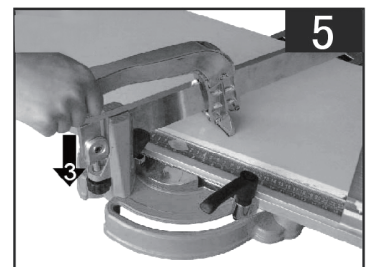
2. Press down the locating screw to zero graduation line, make it and pointer of swivel overlapping. Then tighten the clamp handle, make scaleplate and pressure line overlapping. (Figure 2)



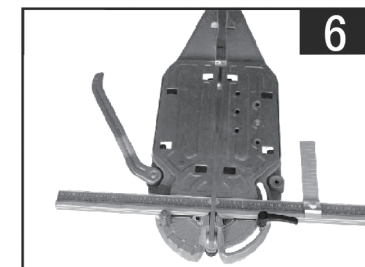
3. Press down the locating screw to make it locate in any degrees from 0 to 45°. Then tighten the clamp handle. (Figure 3)



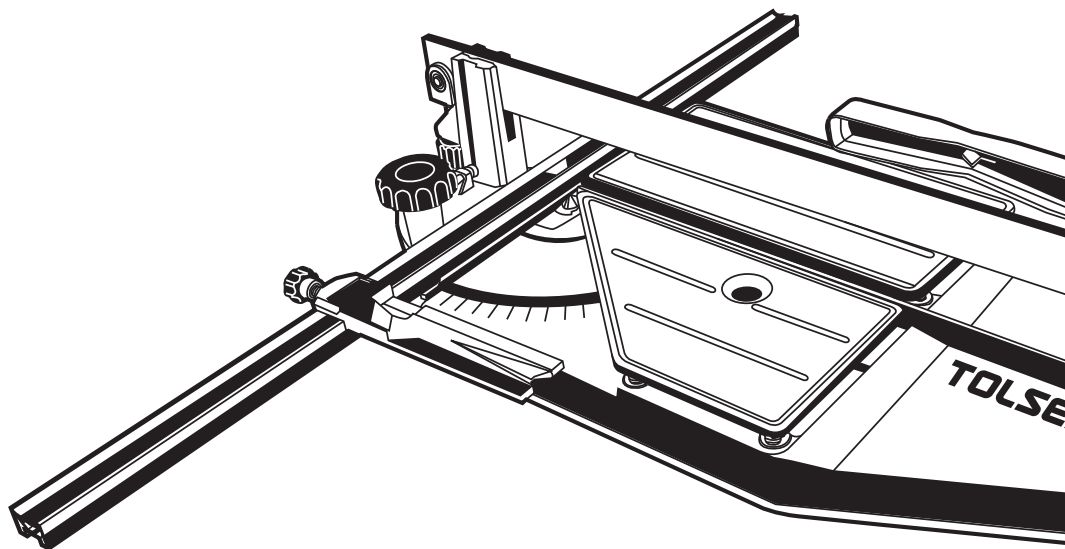
4. After locating, lift the handle, make the cutting wheel on the tile, and cut the tile slowly. (Figure 4)



5. After cutting, put handle near the end face of the tile, then push down, making the tile break. (Figure 5)



6. When cutting the tile, outspread bracket can be unfolded for operating conveniently. (Figure 6)



SUZHOU TOLSEN TOOLS CO.,LTD.

www.tolsentools.com

TOLSEN is a trademark or
registered trademark of TOLSEN
TOOLS. All rights reserved.
MADE IN CHINA



SCAN TO VISIT
PRODUCT LINK
41090



SCAN TO VISIT
PRODUCT LINK
41093



SCAN TO VISIT
PRODUCT LINK
41094